

modric



modric



SS
Satin Stainless Steel (316).



PS
Polished Stainless Steel (316).

The Modric range of door furniture was conceived in 1965 on the basis of a dimensionally and aesthetically co-ordinated range of items to allow maximum interchangeability.

The principle of modular unsprung components was revolutionary and Modric soon became a design classic.

Through continuous development to the range, Modric today represents a timeless, clean-cut range of door furniture available in a number of metallic finishes. Products are hand finished to provide the very best quality available. Modric is known for fine design and extraordinary durability.

Finishes



GT
PVD Gold on Polished Stainless Steel (316).



BF
Simulated Bronze.



MA
Modric Anodised Aluminium.

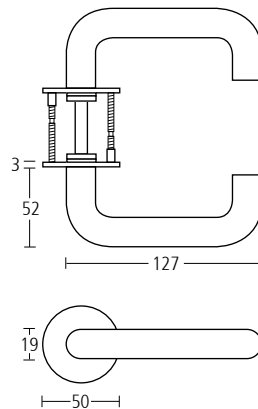
modric



3502

Modric lever handles on concealed Quadaxial fixing roses.

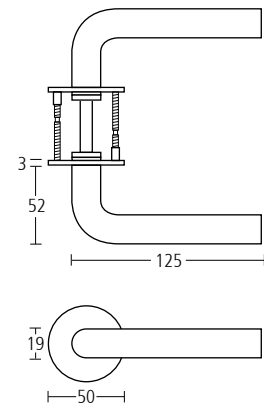
Finishes: SS • PS • GT • BF • MA



3503

Modric lever handles on concealed Quadaxial fixing roses.

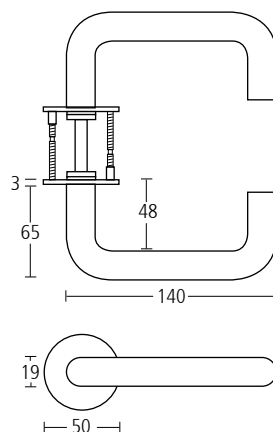
Finishes: SS • PS • GT • BF • MA



3502D

As above but with extra projection from the door.

Finishes: SS • PS • GT • BF • MA



The unique feature of Allgood lever handles is the Quadaxial rose assembly. This provides a corrosion resistant, maintenance free solution.

All Modric lever sets have independent test evidence to BS EN 1906, classification

47-1140U

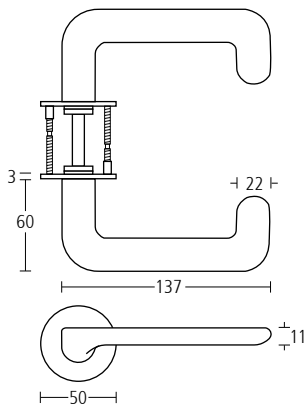
Lever handles



3504

Modric lever handles on concealed Quadaxial fixing roses.

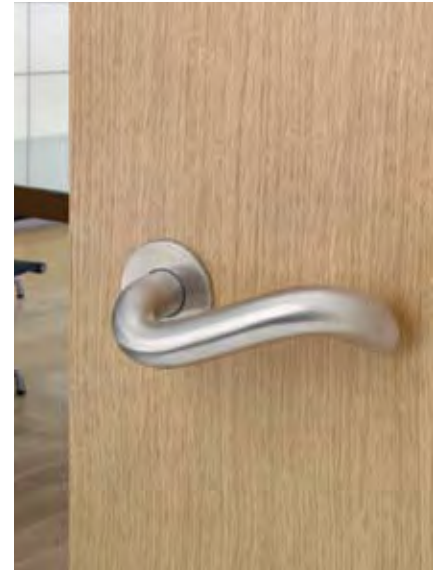
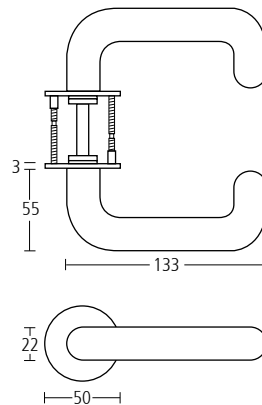
Finishes: SS • PS • GT • BF • MA



3506

Modric lever handles on concealed Quadaxial fixing roses.

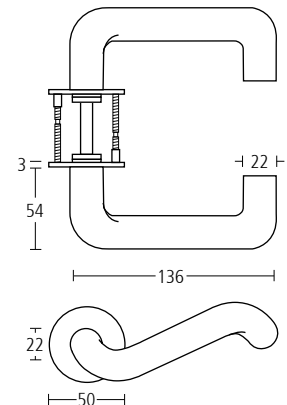
Finishes: SS • PS • GT • BF • MA



3512

Modric lever handles on concealed Quadaxial fixing roses.

Finishes: SS • PS • GT • BF • MA



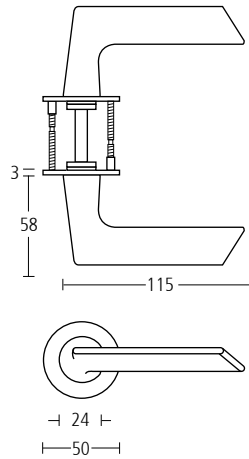
modric



3515

Modric lever handles on concealed Quadaxial fixing roses.

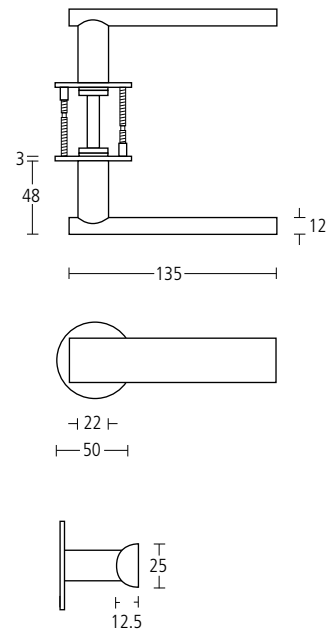
Finishes: SS • PS • GT • BF • MA



3520

Modric lever handles on concealed Quadaxial fixing roses.

Finishes: SS • PS • GT • BF



The unique feature of Allgood lever handles is the Quadaxial rose assembly. This provides a corrosion resistant, maintenance free solution.

All Modric lever sets have independent test evidence to BS EN 1906, classification

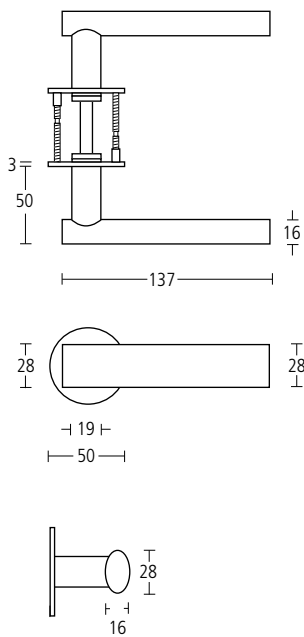
47-1140U



3530

Modric lever handles on concealed Quadaxial fixing roses.

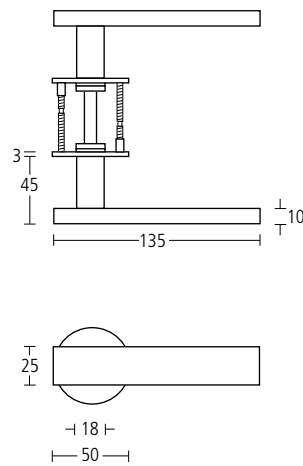
Finishes: SS • PS • GT • BF



3540

Modric lever handles on concealed Quadaxial fixing roses.

Finishes: SS • PS • GT • BF



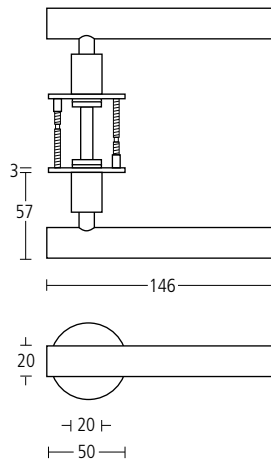
modric



3550

Modric lever handles on concealed Quadaxial fixing roses.

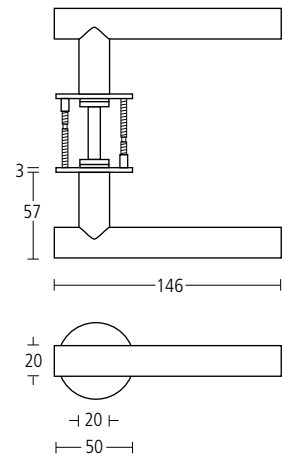
Finishes: SS • PS • GT • BF



3560

Modric lever handles on concealed Quadaxial fixing roses.

Finishes: SS • PS • GT • BF



The unique feature of Allgood lever handles is the Quadaxial rose assembly. This provides a corrosion resistant, maintenance free solution.

All Modric lever sets have independent test evidence to BS EN 1906, classification

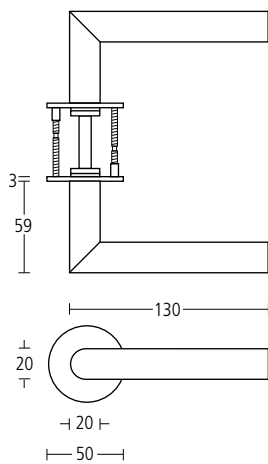
47-1140U



3570

Modric lever handles on concealed Quadaxial fixing roses.

Finishes: SS • PS • GT • BF



modric



6594

Modric pull handle with bolt through fixings. 400mm centres.

Finishes: SS • PS • GT • BF • MA

6594BB

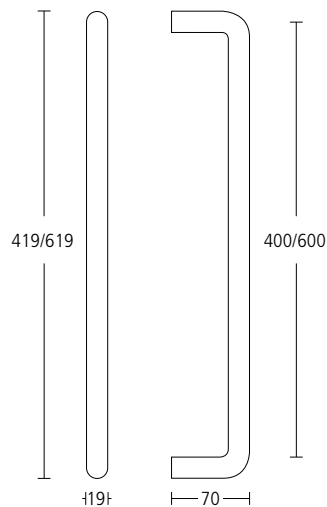
Pair, as above, with back-to-back fixings.

6597

Modric pull handle as per 6594 but with 600mm centres.

6597BB

Pair, as above, with back-to-back fixings.



6594C

Modric cranked pull handle with bolt through fixings. 400mm centres.

Finishes: SS • PS • GT • BF • MA

6594CBB

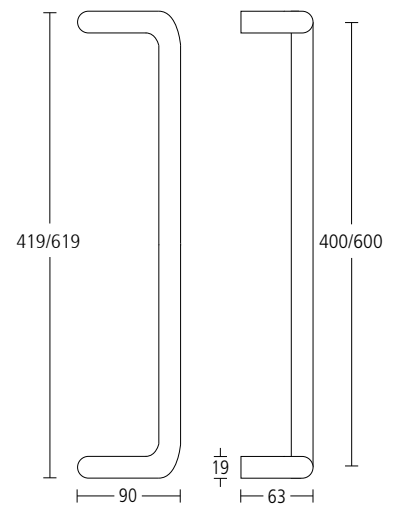
Pair, as above, with back-to-back fixings.

6597C

Modric cranked pull handle as per 6594C but with 600mm centres.

6597CBB

Pair, as above, with back-to-back fixings.



Other lengths available to special order. Please note, the maximum recommended fixing centres for handles utilising two fixings is 1200mm. Please contact Allgood for specification advice.

Pull handles



6584L/R

Modric pull handle with bolt through fixings. 380mm centres (diagonal). STATE HAND. Right hand shown.

Finishes: SS • PS • GT • BF • MA

6584BBL/R

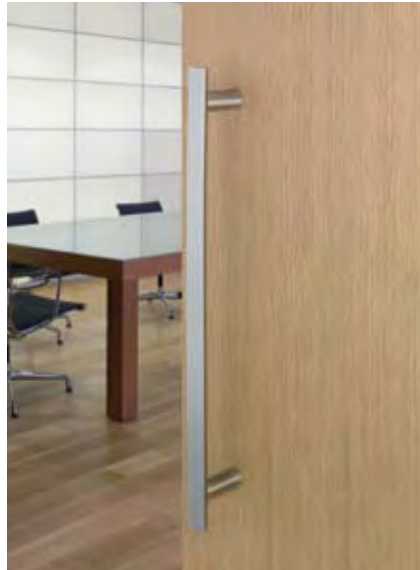
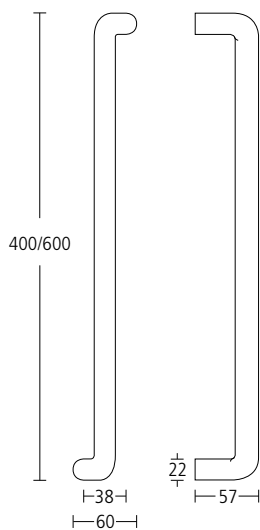
Pair, as above, with back-to-back fixings.

6588L/R

Modric pull handle as per 6584L/R but with 579mm centres (diagonal). STATE HAND. Right hand shown.

6588BBL/R

Pair, as above, with back-to-back fixings.



1720

Modric pull handle with bolt through fixings. 400mm centres.

Finishes: SS • PS • GT • BF

1720BB

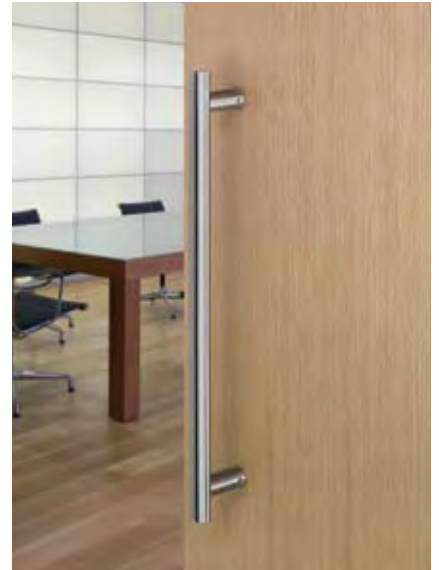
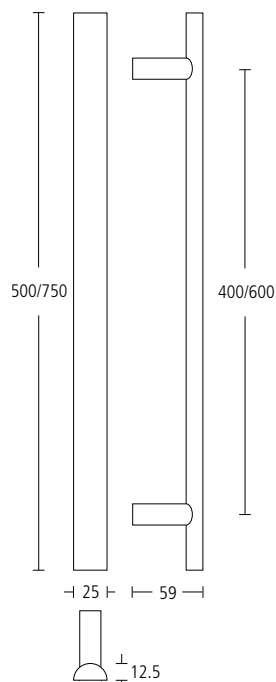
Pair, as above, with back-to-back fixings.

1721

Modric pull handle as per 1720 but with 600mm centres.

1721BB

Pair, as above, with back-to-back fixings.



1730

Modric pull handle with bolt through fixings. 400mm centres.

Finishes: SS • PS • GT • BF

1730BB

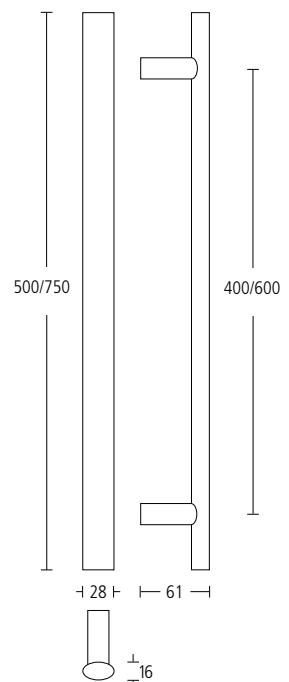
Pair, as above, with back-to-back fixings.

1731

Modric pull handle as per 1730 but with 600mm centres.

1731BB

Pair, as above, with back-to-back fixings.



modric

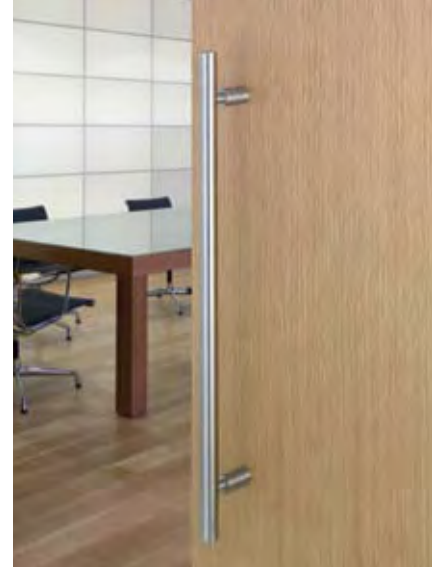
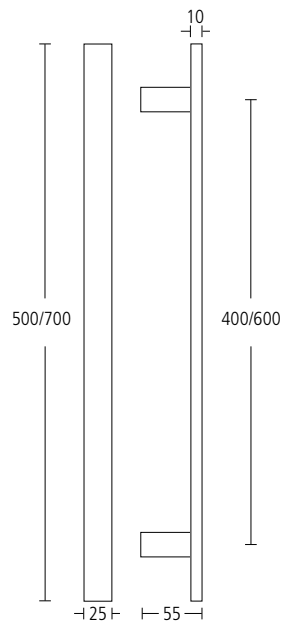


1740
Modric pull handle with bolt through fixings.
400mm centres.
Finishes: SS • PS • GT • BF

1740BB
Pair, as above, with back-to-back fixings

1741
Modric pull handle as per 1740 but with
600mm centres.

1741BB
Pair, as above, with back-to-back fixings

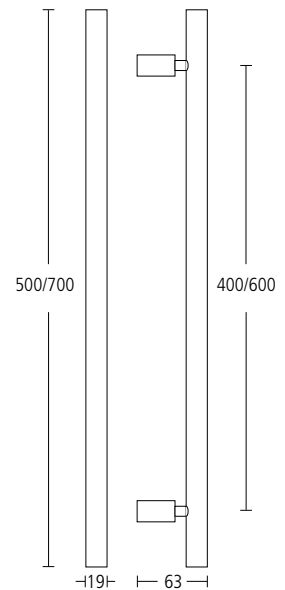


1750
Modric pull handle with bolt through fixings.
400mm centres.
Finishes: SS • PS • GT • BF

1750BB
Pair, as above, with back-to-back fixings

1751
Modric pull handle as per 1750 but with
600mm centres.

1751BB
Pair, as above, with back-to-back fixings



Other lengths available to special order.
Please note, the maximum recommended
fixing centres for handles utilising
two fixings is 1200mm. Please contact
Allgood for specification advice.

Pull handles and push plates

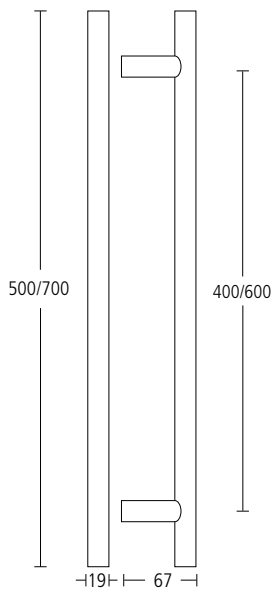


1760
Modric pull handle with bolt through fixings.
400mm centres.
Finishes: SS • PS • GT • BF

1760BB
Pair, as above, with back-to-back fixings

1761
Modric pull handle as per 1760 but with
600mm centres.

1761BB
Pair, as above, with back-to-back fixings

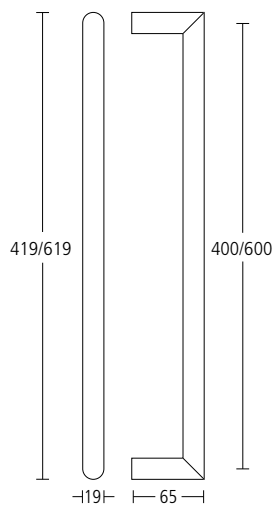


1770
Modric pull handle with bolt through fixings.
400mm centres.
Finishes: SS • PS • GT • BF

1770BB
Pair, as above, with back-to-back fixings

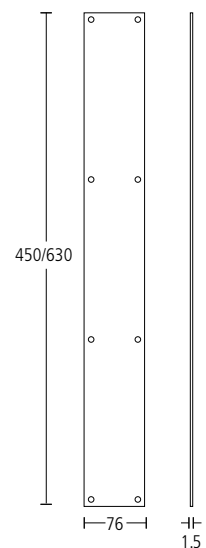
1771
Modric pull handle as per 1770 but with
600mm centres.

1771BB
Pair, as above, with back-to-back fixings



6801G
Modric push plate. 450x76x1.5mm.
Finishes: SS • PS • GT • BF • MA

6801J
Modric push plate. 630x76x1.5mm.
Finishes: SS • PS • GT • BF • MA





modric

modric Inc,
National Headquarters,
P.O.Box 1639
Arboles
Colorado 81121

t. 800-739-0202
f. 800-813-2128
e. Info@modric.net